

# RFW Centre for Child Health and Learning



# Background & Development Vision

From 2009–2013 RFW engaged in project inception and feasibility.

In April 2013 a Concept Plan was approved to develop the entire RFW site, including:

- 7 floor Centre for Child Health & Learning
- Drummond House outdoor play areas
- 8 storey- five star hotel
- 5 storey residential apartments with ground retail
- Existing 2 storey terrace house Medical Centre

The Concept Plan was based on:

- Highest and best use of RFW's land
- The assumption RFW would sell or joint venture some of the development in order to fund the new medical centre

**April 2013 onwards** – CEO & Board reconsidered sale of RFW land and crafted a vision for a Health Hub and long-term expansion of services in collaboration with world's best health providers. Discussion undertaken with various government bodies, Manly Village Public School and health/medical research professionals.

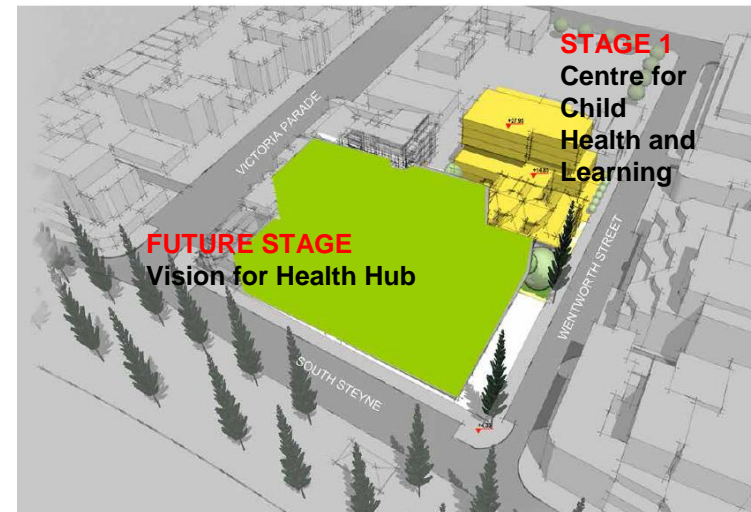
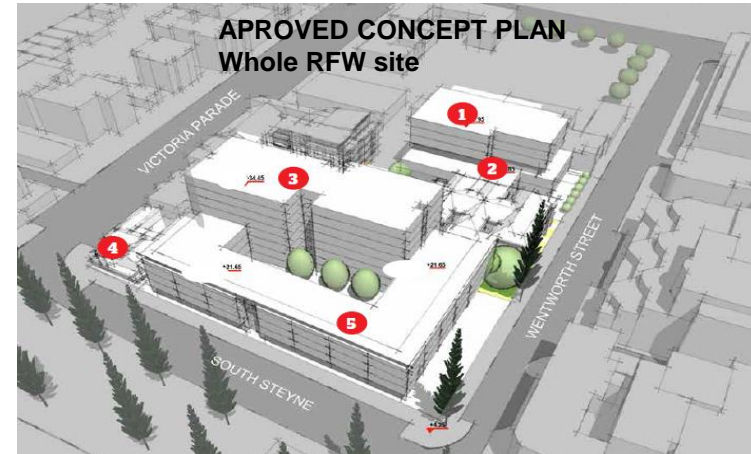
RFW appointed an award-winning design team to create stage 1 of its redevelopment - a \$35 million Centre for Child Health and Learning

This development will require:

- A successful RFW Capital Campaign to raise funds for the building (to be launched in December 2014)
- Government support – State and Federal

**Aug 2014** – DEC formally declines RFW offer to provide 4 classrooms in the new Centre of Child Health and Learning. No decision is yet reached on the RFW school land sites and discussions continue.

**Dec 2014** – Development Application to be submitted for Stage 1 only – the Centre for Child Health and Learning.





# Centre for Child Health and Learning

## What are the guiding principles of the Centre for Child Health and Learning?

- A “Home away from Home” for country families
- Warm, welcoming and non-institutional
- Child and family focus
- Sensitive to the history of RFW
- Engage our local Manly Community
- Design excellence

## What is Centre for Child Health and Learning?

- Purpose built clinical consultation rooms
- Fully integrated School, with clinical observation spaces
- New telecare centre
- Integrated research and evaluation to ensure evidence-based practice
- Open space and recreational play space
- Office space to accommodate all RFW staff
- Volunteer spaces and break out rooms for parents and staff
- Other specialist services - TBD



Artist impressions

# Community & Stakeholder Engagement

RFW is committed to engaging with our local and rural communities as we undertake stage 1 of our redevelopment and will continue to do so throughout future stages.

## November 2014

- Website for community information [www.rfwredevelopment.org.au](http://www.rfwredevelopment.org.au)
- Stakeholder calls and meetings with Councillors, Precinct committees, neighbours and other key parties
- Advertisement and article in the Manly Daily
- Postcard drop and door knock in Manly surrounds
- INFORMATION SESSIONS
  - Wednesday 5 November 4:00pm-7:00pm
  - Thursday 6 November 6:00pm-8:00pm
  - Thursday 13 November 10:00am-1:00pm
  - Friday 14 November 1:00pm-4:00pm

## December 2014

- 90th Anniversary Celebration (6th December 2014)
- Launch RFW Capital Campaign
- Submit Stage 1 Development Application for the Centre for Child Health & Learning

## Mid 2015

Development Approval anticipated

From early to mid 2015, detailed design and project costing will be underway

Demolition of Elsie Hill Building and construction commencement upon DA approval

## Late 2016

Anticipated completion of the Centre for Child Health & Learning, subject to a successful capital campaign